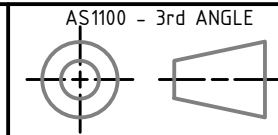


**PROPRIETARY AND CONFIDENTIAL**  
 THE INFORMATION IN THIS DRAWING IS THE SOLE PROPERTY OF  
 Hi Tech Plastics (2002) Limited. ANY REPRODUCTION IN PART  
 OR AS A WHOLE WITHOUT PERMISSOIN OF Hi Tech Plastics  
 (2002) Limited IS PROHIBITED.



Hi Tech Plastics 2002 Ltd  
 10 Clow Place  
 Frankton  
 Hamilton  
 Ph: 07 843 3343  
 Email:  
 info@hitechplastics.co.nz  
 www.hitechplastics.co.nz

DESIGNED BY:  
 Bevan Mills



SCALE:

SHEET:  
 1 / 1

MASS:  
 15.4 kg

PART No:  
 SR04

DESCRIPTION:  
 Rear Seat - SR04

DRG NUMBER:  
 SR04

A3