

HiTech

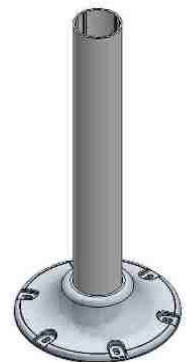
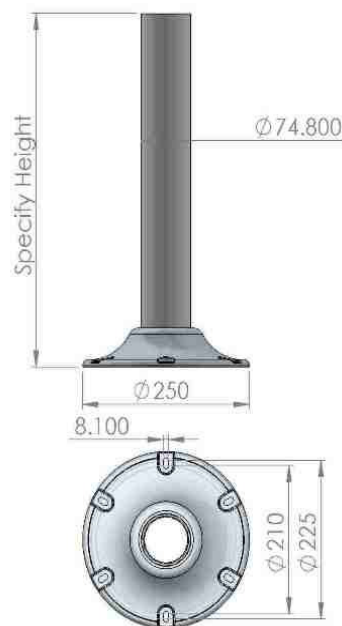
PLASTICS

Fixed Pedestal - FP200-800

The Fixed Pedestal is made of Marine Grade Aluminium Extrusion which gives excellent non-corrosive protection. The Fixed Pedestal is designed for maximum stability with a specially designed base casting.



Standard Heights:	200 - 800mm (@ 50mm increments)
Outer Tube Size:	75mm
Base Diameter:	250mm
Base Hole PCD:	215mm
Material:	Marine Grade Aluminium
Finish:	Anodised/Powder Coated
Bearing Weight:	120kg (includes chair weight)
Optional:	Customised height
Product Weight:	1.45kg



Hi Tech Plastics has the expertise to custom design & build products to specific requirements.

Hi Tech Plastics 2002 Ltd

10 Clow Place, PO Box 5303, Frankton, Hamilton 3242, New Zealand

Phone: +64 7 843 3343 Fax: +64 7 843 3346 email: sales@hitechplastics.co.nz www.hitechplastics.co.nz,